



# Willowbend

4136 Willowbend Blvd, Houston, TX 77025

Price range: \$279K - \$379K



- Centrally located with easy access to the Downtown and Highway 90
- Great mix of contemporary and traditional styles
- Private community features a surrounding brick wall and gorgeous landscaping
- Per plan options with fenced in yards with paver patios
- Open living spaces with lots of natural light and soaring 12 ft ceilings
- Bosch Luxury Appliances with quartz countertops, and soft close cabinets

## For More Information

**Rubi Leal**

*Sales Consultant*

**Greg Burton**

*Sales Consultant*

**Kathryn Yao**

*Sales Consultant*

☎ 832-874-0398 ☎ 713-503-4582 ☎ 713-340-9010

✉ rubil@intown-homes.com  
greg@intown-homes.com  
kathryny@intown-homes.com

📘 facebook.com/intownhomes

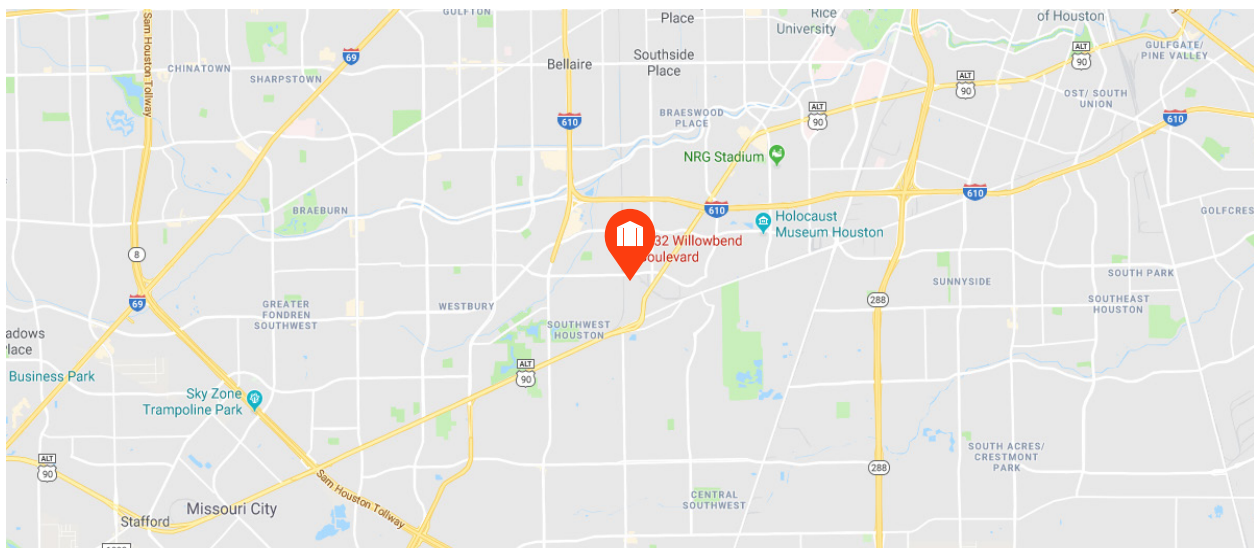
📷 instagram.com/intownliving

## Site Plan



Artist rendering only. Actual colors and plans may vary significantly.

## Location





## Custom Features

### Elegant Exteriors

---

- Custom designs from Intown Homes architects
- Modern designs
- Eight-foot mahogany entry door
- Full gutters around entire home
- **Nichiha** fiber cement siding
- **Nichiha** stucco board
- 2-car garage with ample storage space
- 8' x 10' back patio (per plan)
- Professionally designed landscape package
- Slate style composition shingles
- Energy efficient, double pane windows with Low-E insulated glass
- Elegant exterior coach lighting

### Inspiring Interiors

---

- Wood floors
- Wrought iron spindles
- Double ceiling molding in main living area
- Five inch base molding throughout home
- Eight-foot raised panel interior doors
- Optional private residential elevator (per plan)
- Elegant stairways with hardwood tread to second and third floor
- Rounded sheetrock corners
- 10' or 12' ceilings (per plan)

### Luxurious Master Suites

---

- Single ceiling molding in master bedroom
- **Natural Stone** tile floors and shower surrounds
- Six-foot garden tub (per plan)
- Oversized glass enclosed shower
- Dual vanities (per plan)

- Framed mirrors
- Oversized walk-in closets
- 12' ceilings in master bedroom

### Gourmet Kitchens

---

- Spacious gourmet kitchens
- Quartz/Granite countertops
- 42-inch flat panel cabinets with decorative molding
- **Bosch Stainless** 36" cooktop
- **Bosch Stainless** single oven
- **Bosch Stainless** microwave
- **Bosch Stainless** fully integrated dishwasher
- **Bosch Stainless** vent hood
- Under mount sinks with garbage disposal
- **Natural Stone** backsplash
- **Insinkerator** 1/3 horsepower disposal
- Ice maker connection for refrigerator
- Recessed can lights with LED bulbs
- Under cabinet lighting

### Quality Construction

---

- Engineered, certified and inspected foundations
- Engineered flooring system
- Five-point extensive inspection process: structural, frame, exterior, air infiltration and quality assurance
- Fully installed alarm system with home automation
- RG6 digital coax cable for cable and internet
- CAT5 wiring for phone and home internet
- Pre-wire for surround sound in family room

Continuing a policy for constant improvement, builder reserves the right to make modifications including changes, additions or deletions in the features, plans and specifications, and to substitute material of similar quality without notice or prior obligation. \*Features may be available only in specific plans and/or in specific communities. The availability of these features is subject to change without notice. Features on homes constructed prior to this printing may have different features. No representation or warranties either expressed or implied are made as to the accuracy of the information herein or with respect to the suitability, usability, feasibility, merchantability or conditions of any property herein described. Rev. 08-26-10 All Rights Reserved. ©Intown Homes 2017







## Eco-Hip™ for Sustainable Green Living

- **InTown Homes Eco-Hip™** program meets and exceeds the New International Energy Code Standard
- 2 x 6 exterior walls increase structural rigidity, and adds more insulation
- Strategically used engineered wood
- Dual flush toilets
- **R-19 Insulation** in exterior walls
- **R-38 Insulation** in attic
- Air sealing package
- Bosch or Rheem, tank less water heaters
- **CertainTeed Air Renew Drywall** provides mold and moisture resistance in the home while removing VOCs (Volatile Organic Compounds)
- **DOW WEATHERMATE™** weather barrier system
- **Lennox 16.00 SEER HVAC system** with two-stage compressor
- **Lennox Harmony III™ Zone System** - independent zoning of each floor level for controlled comfort and efficiency
- MERV 10 - high performance media air filter
- Programmable thermostats
- Radiant barrier
- Low-E double pane energy efficient vinyl windows (per community)
- **Energy Star®** appliances
- Duct blaster and blower door testing
- Low VOC paint
- **Hansgrohe** plumbing package

## Building Partners



Continuing a policy of constant improvement, builder reserves the right to make modifications including changes, additions or deletions in the features, plans and specifications, and to substitute material of similar quality without notice or prior obligation. \*Features may be available only in specific plans and/or in specific communities. The availability of these features is subject to change without notice. Features on homes constructed prior to this printing may have different features. No representation or warranties either expressed or implied are made as to the accuracy of the information herein or with respect to the suitability, usability, feasibility, merchantability or conditions of any property herein described. Rev. 08-26-10 All Rights Reserved. ©InTown Homes 2017



# 4136 Willowbend

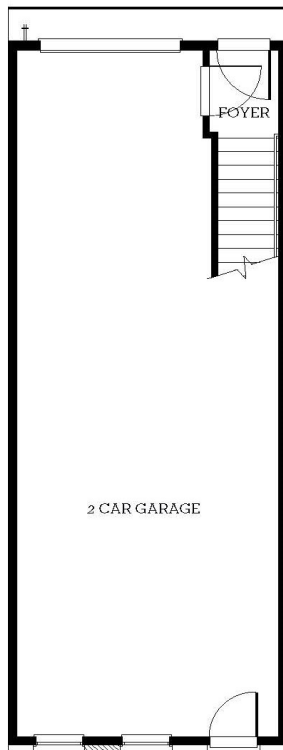
💰 \$279,000

🛏 2 Bedrooms

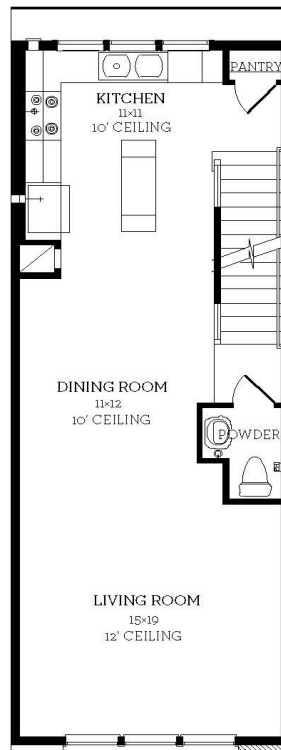
🚿 2.5 Bathrooms

📏 1,399 sqft

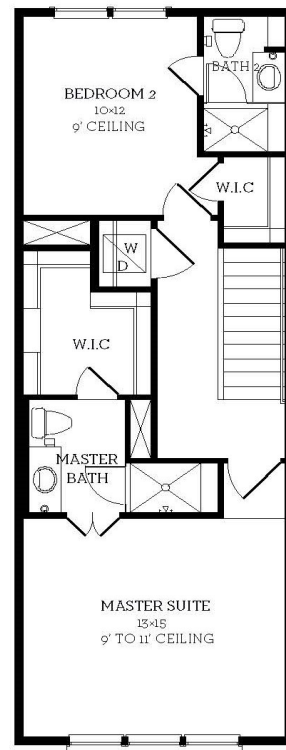
- Full 2 door garage on entire first floor
- Wrap around kitchen opens up to the dining room
- Living room windows bring in plenty of sunlight



**First Floor**  
28 sqft



**Second Floor**  
688 sqft



**Third Floor**  
683 sqft

All prices, features and plans are subject to change without notice. Square footage is approximate. No representation or warranties either expressed or implied are made as to the accuracy of the information herein or with respect to the suitability, usability, feasibility, merchantability or conditions of any property herein described. Rev. 08-26-10 All Rights Reserved. ©InTown Homes 2017





